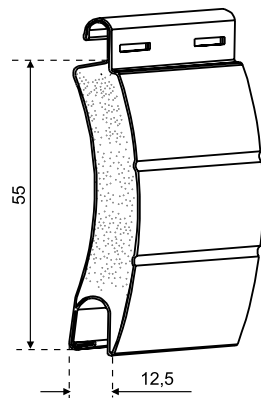
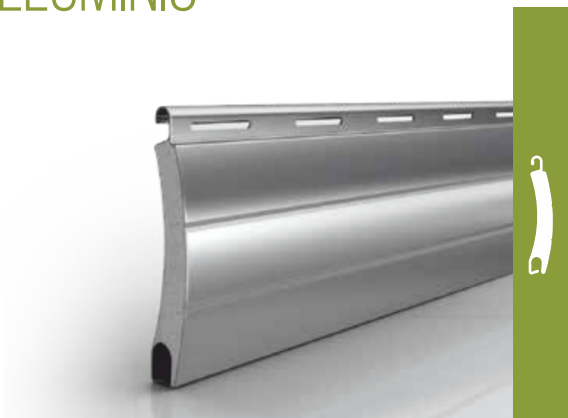


# AVVOLGIBILI

## IN ALLUMINIO



Misura nominale  
12,5x55 mm

Barre per 1 m di altezza  
n° 18

### MD TEST

RESISTENZA AL VENTO

TRASMITTANZA TERMICA

\* NOTA: Vedi tabella Classificazione della resistenza al carico del vento a pag. 64

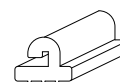
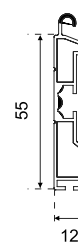
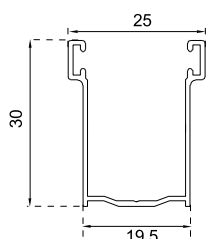
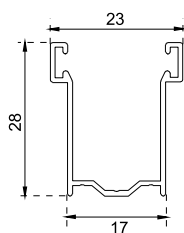
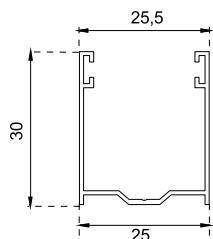
Articolo	Tipologia	Specifiche tecniche	Um
ALL55	Stecche	in alluminio a media densità	mq
AA55HD	Stecche	in alluminio ad alta densità	mq

### DIAMETRO DI ARROTOLAMENTO ► RULLO DA Ø 60

h 1000 Ø 140	h 1500 Ø 170	h 1800 Ø 180	h 2200 Ø 195	h 2800 Ø 213
h 1200 Ø 150	h 1600 Ø 170	h 1900 Ø 185	h 2400 Ø 200	h 3000 Ø 223
h 1300 Ø 160	h 1700 Ø 175	h 2000 Ø 187	h 2600 Ø 213	h 3300 Ø 235
h 1400 Ø 163				

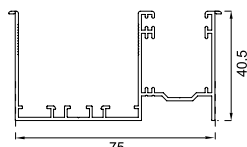


### GUIDE E TERMINALI



<b>ART. GE3025</b> Guida in alluminio 30x25 mm	<b>ART. GE2817</b> Guida in alluminio 28x17 mm	<b>ART. GE3019</b> Guida in alluminio 30x19,5 mm	<b>ART. TER</b> Guida in alluminio 55x12 mm	<b>ART. TERPVCDUO</b> Terminale in PVC
--	--	--	---	---

### GUIDE AD INCASSO PER ZANZARIERE



#### ART. ZKIT75

Profilo pred. con guida

40,5x75 mm